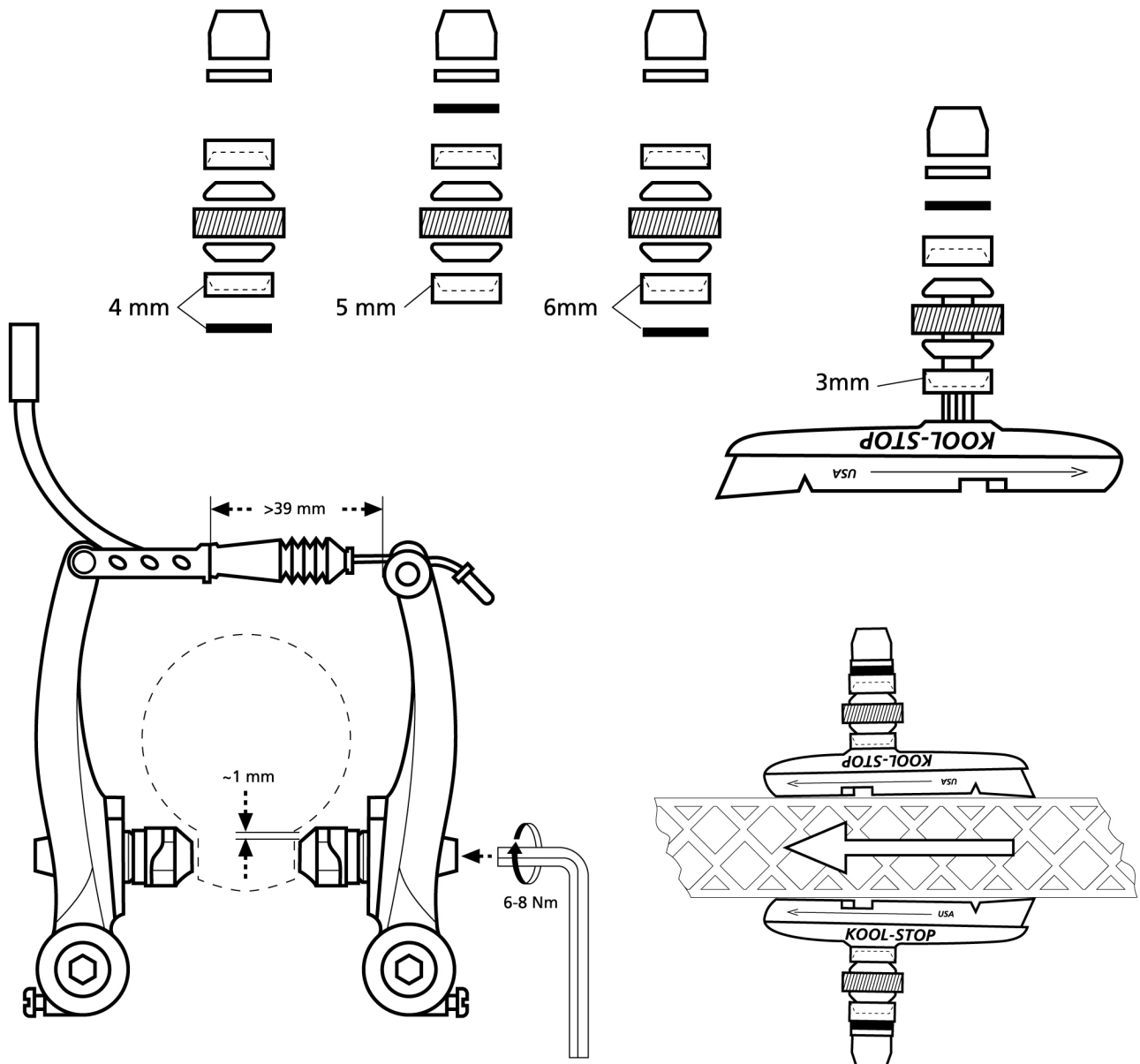




INSTALLATION INSTRUCTIONS

V-BRAKE THREADED

- T1 MTB contoured
- T2 Thinline™
- T3 Supra 2
- T5 Phat Padd™
- T6 BMX contoured



- Clean rim surface before installing new pads.
- Place new pads and finger tighten nuts.
- Align the pads correctly without touching the tire.
- Now tighten the nut with a force of 6-8 Nm.
- Check pad and rim alignment after the pads are broken in and after every ride.
- To reconfigure washers, pliers may be necessary to remove bottom washer from anti-slip base.

IMPORTANT: Designed for bicycle use only. Do not ride bike until brakes are checked and functioning properly. All Kool-Stop Pads meet or exceed C.P.S.C. and D.I.N bicycle standards.